



COMPIDENT SOW MANAGEMENT
ELECTRONIC SOW FEEDING



ELECTRONIC SOW FEEDING

Compident ESF The better way to feed sows

With a variety of new management options that target vaccination, heat detection, reproductive efficiency, nutritional supplementation and animal movement, ESF is a versatile solution for any operation.



- Thousands of units currently in use around the world
- Expertise in system design and technical support
- TOPO: user-friendly computer interface
- Hand-held units enable paperless barn management
- Feeds up to 80 sows per Compident ESF unit
- Straight-ahead exit and retractable feed bowl maximize animal throughput

The Compident ESF system manages the daily feed allowances of each sow with computer controlled supplementation options.



With the experience of feeding more than 200,000 sows on 60 different farms, AP and the Compident ESF provide a cost efficient feeding solution backed by a dedicated team that works solely with the ESF system.



TOPO: COMPIDENT SOW FEEDING SOFTWARE AND HARDWARE

The TOPO Windows CE based system is straightforward and intuitive. Its displays provide a clear overview of the feed strategy and current status. External data backup is easy with the use of a USB stick. As with previous models, a backup battery ensures that data is stored reliably in the event of a power outage. The key data and input menus link up to your Pig Manager Mobile, offering a “paperless” sow and feeding management system.



TOPO UNIT

Remote Operators

- Control feed station functions
- RFID wand connects to a mobile device and operates the Pig Manager Smart system.
- Local adjustment of station feeding parameters, such as calibration and activation of sensors
- Current event status of station
- Transponder test mode
- Diagnostics



EASY CONNECT SMART CONTROL

Pig Manager Mobile

- Feed Management software that runs on either commercially available PDAs or a specialized heavy-duty hand-held device with RFID reader
- Interfaces with Compident controlling software
- Compatible with other applications and management software



PSION HAND HELD UNIT

Convenient Station Console

- Easy push button control for quick access to system functions at the station
- Simple, user-friendly icon identifiers
- Durable, corrosion resistant enclosure



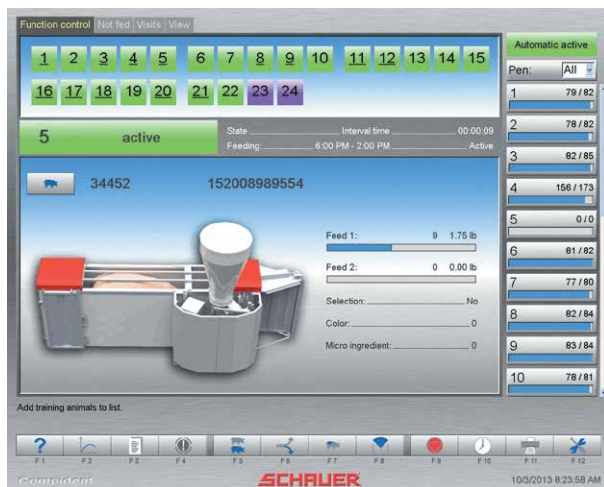
ESF STATION CONSOLE

ELECTRONIC SOW FEEDING

TOPO: COMPIDENT SOW FEEDING DISPLAY

Point and click navigation makes the TOPO system a simple yet technologically advanced pig management solution. TOPO provides a clear overview of the feed strategy and current feeding status.

Name	Group	State	Day	Location No.	Day	Tml	Feed1	Feed2	Wght	Score	Cur%	C
20818	29	pregnant	82	Pen	8	24	4.75	0.00	0	3.25	100	24
20859	29	pregnant	82	Pen	8	24	4.75	0.00	0	3.25	100	24
30038	29	pregnant	81	Pen	8	51	4.25	0.00	0	3.00	100	13
30042	28	pregnant	88	Pen	8	50	4.25	0.00	0	3.00	100	13
30076	29	pregnant	82	Pen	8	51	4.25	0.00	0	3.00	100	13
30093	28	pregnant	87	Pen	8	51	4.25	0.00	0	3.00	100	13
30094	28	pregnant	89	Pen	8	48	4.00	0.00	0	3.25	100	14
30107	29	pregnant	81	Pen	8	51	4.25	0.00	0	3.00	100	13
30128	28	pregnant	88	Pen	8	50	4.25	0.00	0	3.00	100	13
30163	28	pregnant	89	Pen	8	51	4.25	0.00	0	3.00	100	13
30170	28	pregnant	88	Pen	8	51	4.25	0.00	0	3.00	100	13
30173	28	pregnant	89	Pen	8	51	5.00	0.00	0	2.75	100	12
30202	28	pregnant	88	Pen	8	51	4.00	0.00	0	3.25	100	14
30205	29	pregnant	84	Pen	8	60	4.25	0.00	0	3.00	100	13
30214	28	pregnant	82	Pen	8	51	4.25	0.00	0	3.00	100	13
30216	28	pregnant	88	Pen	8	51	4.25	0.00	0	3.00	100	13
30225	29	pregnant	82	Pen	8	51	4.25	0.00	0	3.00	100	13
30227	28	pregnant	84	Pen	8	51	4.25	0.00	0	3.00	100	13
30236	28	pregnant	82	Pen	8	51	4.25	0.00	0	3.00	100	13
30250	28	pregnant	89	Pen	8	51	4.25	0.00	0	3.00	100	13
30288	29	pregnant	82	Pen	8	51	4.25	0.00	0	3.00	100	13
30292	29	pregnant	81	Pen	8	51	4.00	0.00	0	3.25	100	14

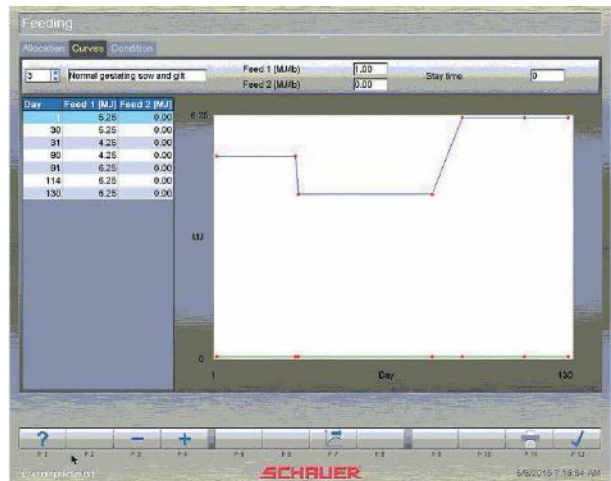


HOME SCREEN

Shows status of feeders, number of sows per pen and current activity in the feeder

SOW HERD DATA

Shows data on status, feed curve, body condition score, pen number, and daily feed quantity



DAILY FEEDER ACTIVITY

Shows when the feeders are feeding sows during the feeding period

FEED CURVE MANAGEMENT

The correct amount of feed for an individual sow throughout pregnancy

Number of present animals: 1921
 Away after selection: 0
 Already eaten: 1715 / 1801
 Training: 92 / 120
 Total no. of animals: 4263
 not assigned: 357
 repl.br.: 63
 gilt: 688
 Selections: 0 / 2
 Color marks: 0 / 0
 Micro ingredients: 0 / 0
 pregnant: 2328
 lactating: 643
 weaned: 203

FEEDER USAGE HISTORY

Shows number of sows visiting each feeder



AP technical support and training can provide assistance to your employees in the transition from crates to pen gestation



FEEDING STATION FUNCTIONALITY

- Feed station recognizes sow through RFID tag
- Trough extends if sow has not consumed daily allowance
- Feed is mixed with water to improve palatability and allow sows to eat more efficiently
- Micro-doser allows for computer control supplementation of diets
- Sow can enter station even after she has eaten; therefore no negative reinforcement is displayed
- Station can be programmed to sort animals based on production criteria
- Up to two different color marking options available
- Extremely durable feeder with years of proven reliability
- Superior feeder design allows up to 80 sows to be fed per day per feeder
- Exit chutes allow timid sows to time their exit while the next sow is eating.



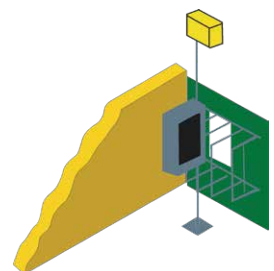
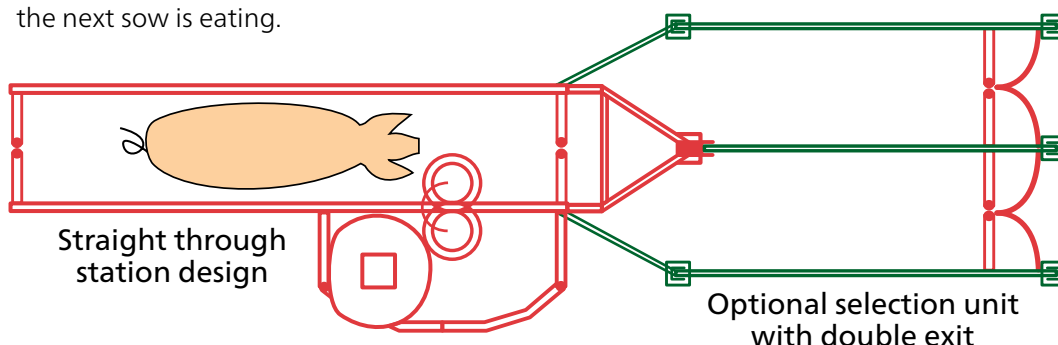
RFID TAG (RADIO FREQUENCY IDENTIFICATION)

COMPIDENT TRAINING STATION

- Specialized feeder built to the dimensions of a gilt
- Training mode accommodates learning of naive animals
- Available for training of replacement gilts
- Compident trainee allows developing gilts to familiarize themselves with the basics of ESF

HEAT DETECTION

- Boar station records females interest in the boar
- Aids in identifying females in estrus



Available Heat Detection Unit

ELECTRONIC SOW FEEDING

Features & Options

The Compident ESF offers many cost cutting features and options for improved performance and customization derived from the many years of knowledge and experience of AP and Schauer, the world's leading manufacturer of ESF systems. From technologically advanced control to reliable equipment and support, the Compident ESF is an easy choice.

- Air pressure control - automatic condensation protection on each station
- Prewired cables with pluggable connectors to switches, valves etc.
- Easy connect (NFC function) to station WLAN for smart control of station operations
- Standard coil springs replace gas springs
- Power monitoring for feed dispenser
- Monitoring of sensor functionality
- Optional animal recognition acoustic signal



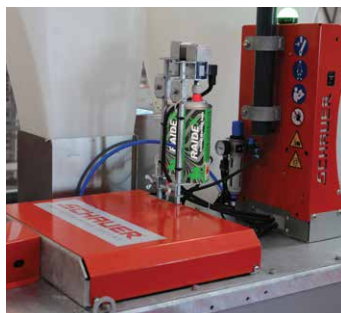
SYSTEM LIGHT PROVIDES AN EASY VISUAL OF OPERATION

Wide opening doors provide clear access to internal components for easy maintenance.





STANDARD COIL SPRINGS



COLOR CODING
(2 PER FEED STATION)



SWIVEL TROUGH



SWIVEL TROUGH
FEEDING POSITION



DURABLE PVC HOPPERS



STANDARD EXIT GATE



OPTIONAL DOUBLE
EXIT GATES



PNEUMATIC FEED DISPENSER

With optional double exit gates, stations can be programmed to sort animals based on production criteria.



Barn Design and Animal Flow

The ESF system is totally flexible in its implementation and readily applicable to retrofitting existing facilities. Our expert team will provide concept designs for your ESF initiatives that include recommendations on pen size, shape and detail to help minimize the untoward effects of social hierarchy in group housing. We will also meet with your management to help identify the best combination of animal flow and grouping strategies that promise maximum productivity and ease of use (e.g. static vs. dynamic or pre- vs. post-implantation crating). There is no substitute for success as over 200,000 sows are being fed by Compident ESF stations in AP designed pen gestation barns across the US.

GROUP FORMATION

Pre-Implantation

Sows are crated after weaning and bred in the stalls. Groups are constituted as soon as animals are out of standing heat. This spares sows the potential of injury if they were allowed to ride each other while in heat. Fertilized eggs are still free floating as they migrate down the fallopian tubes into the uterus prior to the onset of implantation. Any physical skirmishes that might be expected during the formation of a new group do not negatively impact the free floating embryos prior to implantation. This also minimizes the number of gestation stalls in the barn which can be important to markets concerned about animal welfare. It also allows for the most nutritionally challenged animals in the herd, those coming from farrowing to get maximum exposure to the best nutritional tool we have to feed sows, the ESF station. Herd productivity as good or better than gestation stalls can be achieved with this system.

Post-Implantation

Sows are crated after weaning and bred. Groups are constituted only after being confirmed pregnant between 28 and 35 days post-breeding. Implantation is complete before mixing sows and thus pregnancy loss associated with the establishment of social hierarchy during implantation is avoided. This approach most resembles the basic reproductive management of a sow herd housed in crates. Certain routines such as heat check and pregnancy check are not changed in a post implantation barn therefore less training may be required of farm personnel. Once sows are confirmed pregnant fallout is minimized and space utilization is easier to manage.



Let the Experts at AP assist you in designing a system ideally suited to your facilities, animal flow and management style.





Group Structures

The AP/Schauer team has experience with a variety of pen housing options from total slatted confinement barns, partially slatted sow barns, deep bedded barns, to extensive pasture-based systems.

STATIC GROUPS

Group is constituted once, social hierarchy stabilizes, and the group is left intact for the duration of gestation. The goal would be to have one weeks breeding or a fraction of that weeks breeding in a larger sow unit be used to constitute a static group. This approach has the advantage that the breeding group stays physically intact much as it would in a crated facility. However, static groups can create challenges in space utilization which can result in increased facility cost or decreased sow inventory. Static groups are an all in/all out system that requires additional barn spaces in reserve to allow for animal movement. In reality, very few gestation groups are truly static as some sows will drop out due to loss pregnancy, injury or death. This leads to suboptimal utilization of pen space by the end of the gestation period because sows removed from the group cannot be replaced. Alternatively, one can attempt to anticipate this fall out by over stocking the pen initially which can result in a less than ideal per sow space allotment.

DYNAMIC GROUPS

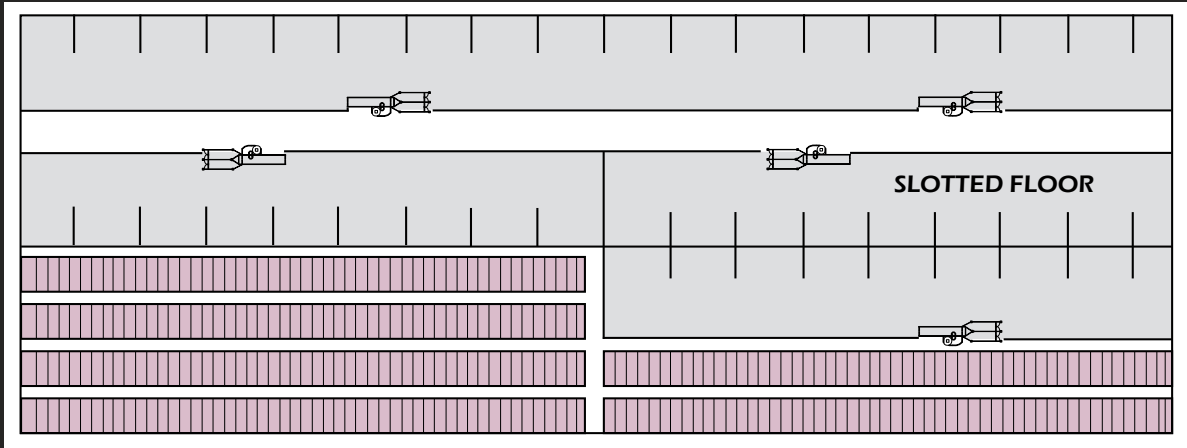
Group constituency is constantly changing. Dynamic groups are essentially a continuous flow system which allows space utilization to be optimized in each pen. Weekly breeding groups are subdivided with animals being introduced into a number of different pens. This approach works well with large group sizes and can also be used to optimize feed station utilization in sow units with smaller breeding groups. Social disruption and associated fighting is minimal in large groups and any repeat breeders can simply be re-bred and left in the same pen. It is not necessary to maintain the integrity of the breeding group because the computer system will track the location and monitor the status of animals regardless of their location. The feeding station can be used to sort or mark the sows for scheduled management activities as a group regardless of which pen the sows are located in. The flexibility in animal movement and the ability to achieve optimum space utilization in all pens makes dynamic groups an attractive solution for many herds.



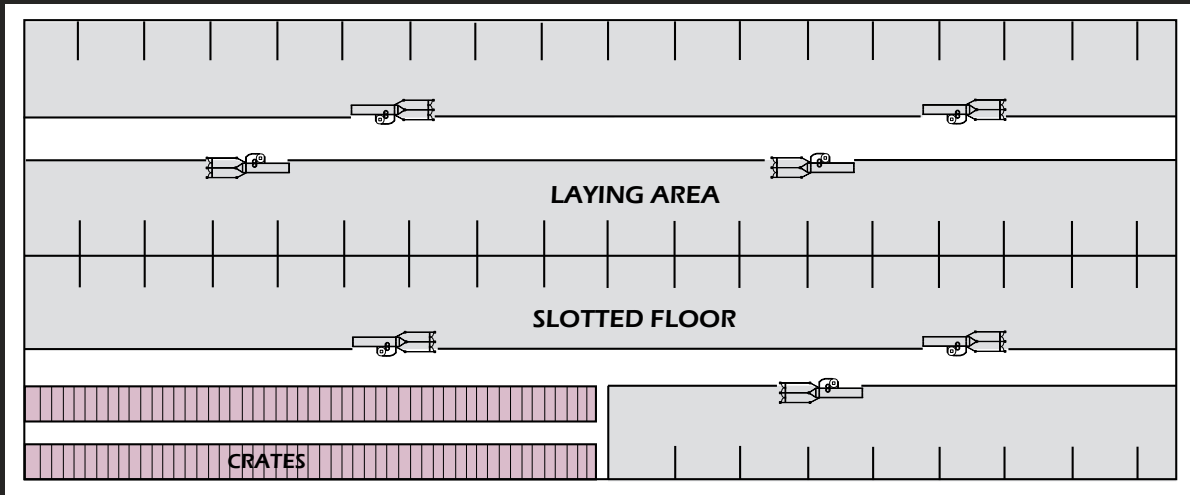
Positioning Compident ESF stations on walkways simplifies sow introduction and registration and provides access to the units for service.



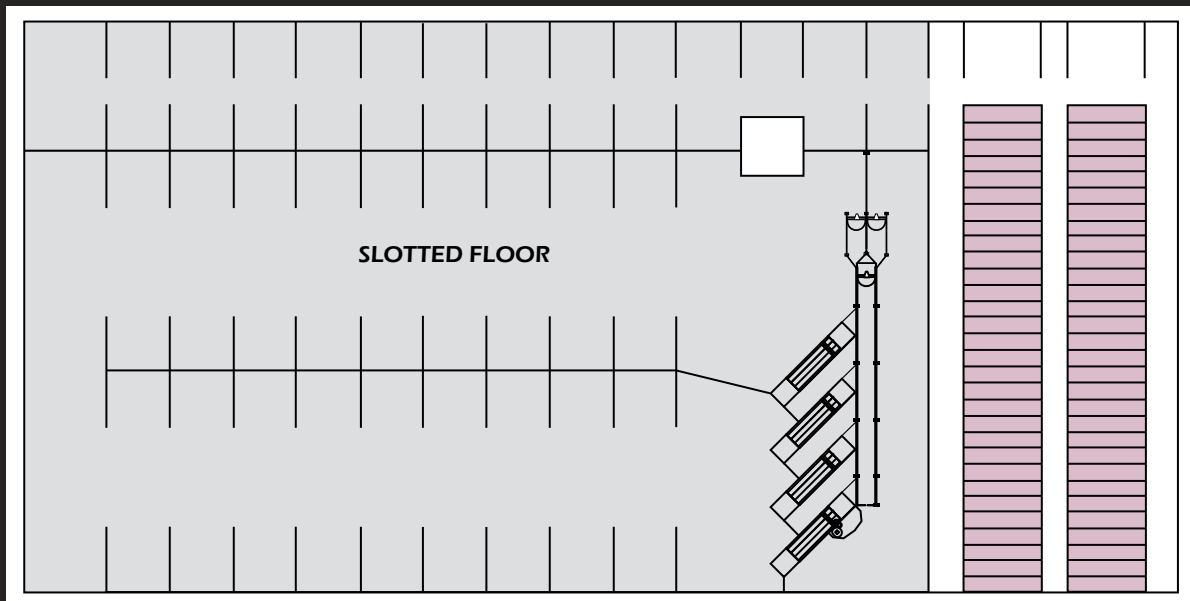
Laying areas divided by partitions provide sow comfort and protection, decreasing aggression and promoting a stable group heirarchy.



Typical post-implantation layout with static groups



Typical pre-implantation layout with large dynamic groups
(Shown with solid sleeping areas)



Optional layout for large dynamic groups

PROVEN & DEPENDABLE™

In today's competitive market place, it is essential to maximize the efficiency and performance of your swine production facilities. AP is the industry leader in the manufacture of proven and dependable swine production equipment designed to help you meet these goals.



The Experts at AP are ready to assist you in implementing the latest technologies in monitoring, feeding, ventilation and housing backed by industry leading warranty, service and technical support.

Automated Production Systems is a division of the GSI Group, LLC, a world class manufacturer of grain storage, drying and handling equipment, poultry production equipment, and swine production equipment based in Assumption, IL. The main manufacturing of swine equipment is centralized in Taylorville, IL with other manufacturing and warehouse facilities located in Africa, Brasil, Canada, China, Malaysia and Mexico.



AP Manufacturing Plant
Taylorville, Illinois USA

Schauer Agrotronics of Prambachkirchen, Austria has over 30 years of experience in the engineering, manufacturing and support of electronic feeding systems for gestating sows. Schauer is the world leader in ESF with thousands of units currently in use around the globe. Schauer's Compident line of electronic sow feeding systems provides software and hardware systems refined by experience to provide reliability and performance.



Schauer Manufacturing Plant
Prambachkirchen, Austria

For more information on AP's many products and services, contact your local AP representative or visit us online at: www.automatedproduction.com



AUTOMATED PRODUCTION SYSTEMS
1004 E. Illinois St. Assumption, IL 62510 USA
Tel: 217-226-4449 Fax: 217-226-3540
Int'l Tel: 217-226-4401
Tech Support: 712-239-1011

AGCO AP is a part of GSI, a worldwide Brand of AGCO | AP-40 06/18
Your Agriculture Company Copyright © 2018 by AGCO Corporation | Printed in USA | Due to continual improvements, AP reserves the right to change designs and specifications without notice.

For more information on AP's many products and services, contact your local AP representative or visit us online at:
www.automatedproduction.com