



PRECISION MANUFACTURING
BULK FEED TANKS



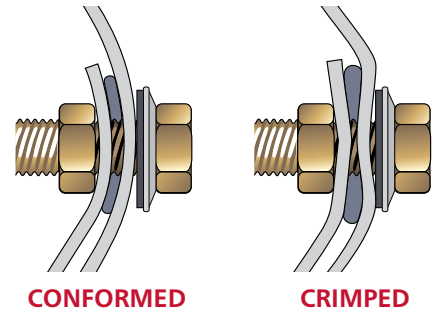
BULK FEED TANKS

Proven & Dependable™

AP's Bulk Feed Tanks perfectly illustrate the attention to detail that quality demands. Every stage of the forming process, from corrugation to die-cut shaping to precision finishing, is controlled at our own facilities to assure quality is maintained.

EXCLUSIVE TO AP HOPPERS

The upper eave, where the hopper is joined to the sidewall, is specially die-formed to conform to the shape of the sidewall corrugation. Most other manufacturers depend on crimping and bolt pressure to force the connection which produces corrosion-prone distortion and dimpling of the sidewall.



60° & 67° HOPPER SLOPES
Available in 60° and 67° slopes in either a 16" or 22" hopper opening, AP hopper panels are die-formed with rounded corners and down-turned sealing edges for safety and a weather-tight fit. Assembly with rounded, truss-head bolts reduces content bridging.



12 GA. HOPPER COLLAR
The hopper collar is a critical component of the Bulk Feed Tank. AP's 6', 7', 9' and 12' bulk feed tanks utilize a 12 gauge hopper collar, producing a part that is 30% stronger than the industry standard 14 gauge collar.



STURDY SIDE LADDERS
A unique, non-interfering safety rail and fully die-formed, sectional side ladder provide solid, comfortable access. Ladder rungs are dimpled for better footing in inclement weather.

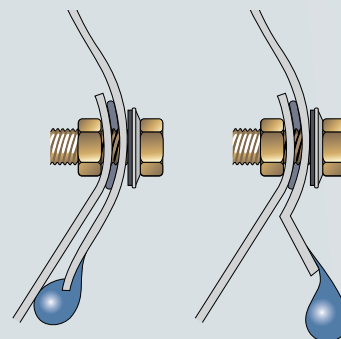


ADDED SECURITY
Stay in compliance with current fall protection standards with AP's flexible cable vertical safety systems and feed tank safety cages.



DRIP LIP WATER DEFLECTION

AP's drip lip water deflection system is a one-of-a-kind, roll-formed bottom sheet edge which forces water away from the hopper and lower boot area, giving complete weather protection without a loss in capacity.





The ability to leverage over 35 years of bin manufacturing experience makes AP a reliable solution to your feed storage needs.

EASY INSTALL BIN LID

Factory assembled for easy installation, AP's feed tank lid features a durable LLDPE construction and swings fully open on 7' diameter bins and larger.

- Available for 30° and 40° roof profiles
- Simplified clamp-band installation of lid assembly peak ring
- Clamp-band design allows installation in 360° orientation
- Retro-fit packages available for 20" and 22-1/2" O.D. peak rings



EASY GROUND CONTROL

AP's feed tank bin lid is easily opened and closed from the ground using a simple pull chain system.

REINFORCED BELTING

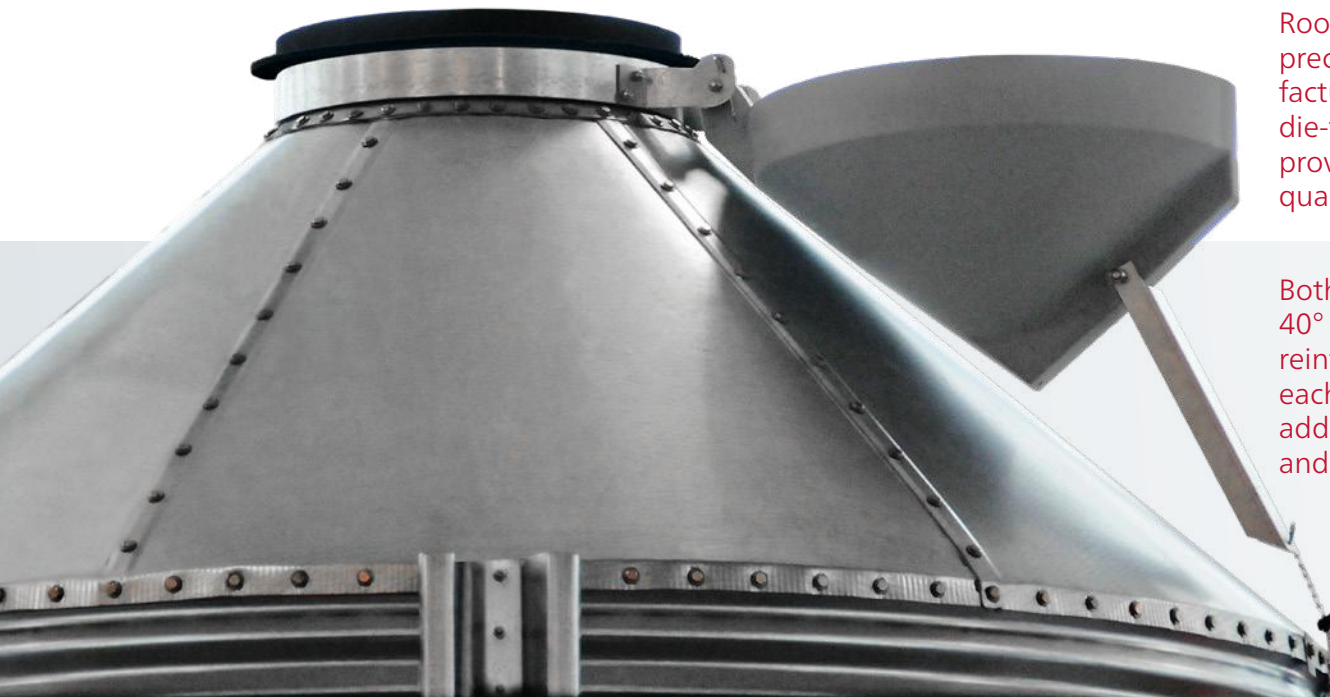
Reinforced rubber belting bumper provides additional protection to peak ring.

SECURE DESIGN

An internal magnet adds additional holding power to keep the lid closed.

OPTIONAL SNOW GUARD

Optional Snow Guard helps deter blowing snow from entering the tank.



Roof panels are precision manufactured using die-form tooling to provide consistent quality.

Both 30° and 40° roofs feature reinforcing ribs at each roof seam for added strength and rigidity.

BULK FEED TANKS

Innovative Solutions

From remote feed management to feed bridging prevention, AP offers innovative solutions that reduce downtime and improve production efficiency.



PRECISION* BIN SCALE

The 4-wire EDGE module and PRECISION load cell combination add extensive feed management benefits to your EDGE control system. Receive low-feed notifications via email or text, 180-day history on the controller including auger run times, feed deliveries, remote access[†] and more. PRECISION load cells include built-in lifting and come pre-calibrated.

*Patent Pending



EDGE® BIN SCALE

The 3-wire EDGE® module utilizes Feed-Link™ load cells for accurate and reliable bin weighing. Receive all the benefits the EDGE control system has to offer including low-feed notifications, 180-day history on the controller, auger run times, feed deliveries, remote access[†] and more.



FEED-LINK™ BIN SCALE

Feed-Link™ is a cost-effective bin scale alternative offering feed monitoring and inventory management either at the site or from a remote location. The display unit can be mounted either on the bin or up to one hundred feet away. The digital display can be set to display pounds, kilograms or percentage of full.

CONVENIENT BUILT-IN LIFTING

The built-in lifting mechanism on select load cell models provides convenient installation on an empty bin. Simply attach the load cell to the bin leg and turn the top adjustment bolt to lift the bin to the appropriate height. The compact designs of the load cell assemblies only increase the overall height of the feed bin approximately three inches (eight centimeters).



PRECISION 10,000 lb. (4,500 kg.) Load Cells with Lifting



Feed-Link 5,000 lb. Load Cell with Lifting



Feed-Link 10,000 lb. Load Cell with Lifting

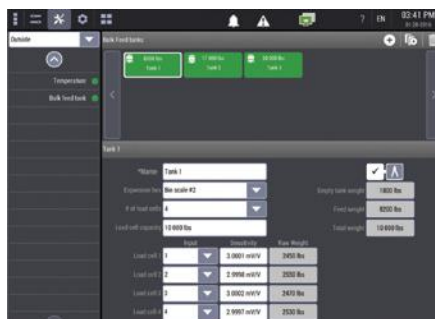


Feed-Link 5,000 or 10,000 lb. Load Cells

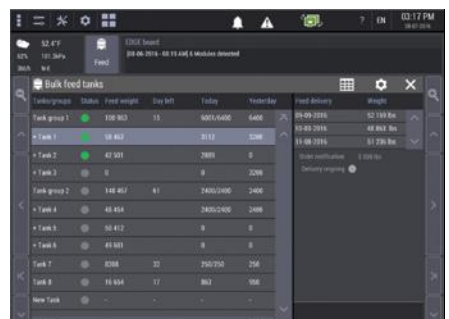
EdgeIP and GSIEDGE.com

Utilize the EdgeIP app to connect[†] to your EDGE bin scale using your mobile internet device for real-time access to your feed inventory and consumption data. Upgrade to a GSIEDGE.com license to monitor and manage all aspects of your production process including ventilation, cooling, heating, lighting, animal weight and watering.

[†]Remote access and/or GSIEDGE.com benefits require an internet connected EDGE® control system and related control modules.



Easy setup via a simple user-friendly interface



Organize feed tanks into groups to easily monitor feed inventory and consumption



Surpassing expectations with superior product construction and innovative solutions is what we do.

FLOW HAMMER

Feed bridging is more common as feed rations change due to fluctuating input costs and the use of alternative feed stuffs to lower cost and gain feed efficiency. The Flow Hammer is a reliable and affordable solution that easily adapts to most existing feed bins. This patented* product aids in the prevention of out-of-feed events in all phases of swine production.

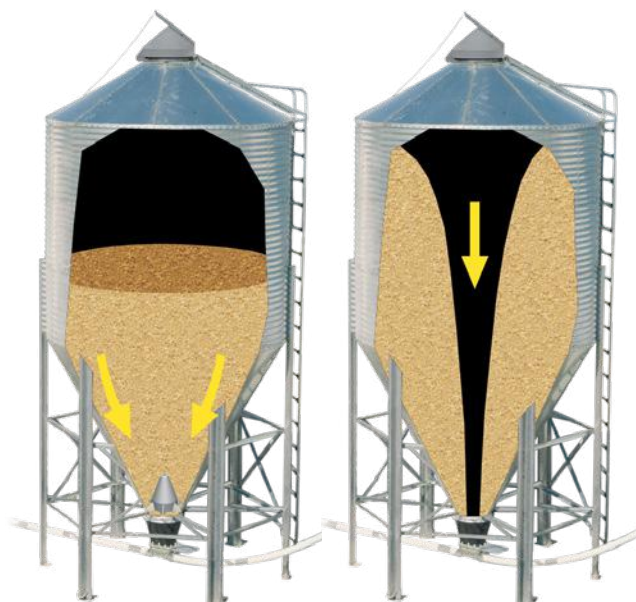
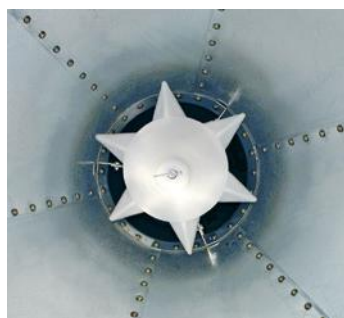


The Flow Hammer's low frequency/ high impact design pro-motes feed flow without damaging your feed bin or voiding the AP warranty.

U.S. Patent No. 9,493,300

GO WITH THE SURE-FLO

An available option for 16" to 22" hoppers, Sure-Flo directs feed down the hopper of the bin rather than down the center creating a first in, first out feed flow. The gentle movement of the heavy-duty molded cone enhances flow as feed passes over it. The Sure-Flo support bracket easily bolts to the hopper collar of new or existing feed bins.



WITH SURE-FLO

WITHOUT SURE-FLO

BULK FEED TANKS

BOOTS AND UNLOADERS

AP offers several unloader and boot type options designed for years of efficient and reliable operation. All boots are chemically blended with specially formulated ultraviolet inhibitors and impact modifiers to enhance durability and resilience. Unloaders include heavy-duty ball anchor and bearing assemblies for increased service life and reduced maintenance. From feed tank to feeder, you can rely on your AP feed delivery system to go the distance.



**BLACK STRAIGHT
DROP BOOT**



**BLACK 30°
DROP BOOT**



**TRANSLUCENT STRAIGHT
DROP BOOT**



**CLEAR STRAIGHT
DROP BOOT**



QUALITY UNLOADERS

All unloaders have a slide gate above the auger to shut feed off and a side inspection door. AP unloaders are available for 2.2" (55mm), 3" (75mm), 3.5" (90mm) and 5" (125mm) Flex Flo™ or 4" and 6" rigid auger systems.



HEAVY-DUTY METAL BOOTS

Multiple outlet requirements can be easily handled by our 22" (559mm) all metal, double and triple boots.



Long lasting and proven performance makes AP boots and unloaders a trusted choice.

Dimensions & Specifications

6' - 15' DIAMETER BULK FEED TANKS

DIAMETER (FEET)	DIAMETER (METERS)	NO. OF RINGS	ANGLE OF HOPPER	FILL HEIGHT (FEET), 30° ROOF	FILL HEIGHT (FEET), 40° ROOF	FILL HEIGHT (METERS), 30° ROOF	FILL HEIGHT (METERS), 40° ROOF	*MAX. CAPACITY (BU), 30° ROOF	*MAX. CAPACITY (BU), 40° ROOF	*MAX. CAPACITY (CU.FT.), 30° ROOF	*MAX. CAPACITY (CU.FT.), 40° ROOF	*MAX. CAPACITY (M.TONS), 30° ROOF	*Max. Capacity (M.Tons), 40° Roof	*Max. Capacity (US.Tons), 30° Roof	*Max. Capacity (US.Tons), 40° Roof
6'	1.83	1	60°	10' 9"	11' 3"	3.28	3.43	111	118	138.0	147.60	2.50	2.67	2.76	2.95
6'	1.83	2	60°	13' 5"	13' 11"	4.09	4.25	171	178	212.6	222.21	3.86	4.03	4.25	4.44
6'	1.83	3	60°	16' 1"	16' 7"	4.90	5.06	231	238	287.2	296.82	5.21	5.38	5.74	5.93
6'	1.83	4	60°	18' 9"	19' 3"	5.72	5.87	291	298	361.8	371.43	6.56	6.74	7.24	7.42
7'	2.13	1	67°	13' 8"	14' 3"	4.16	4.35	185	196	230.1	244.96	4.17	4.44	4.60	4.89
7'	2.13	2	67°	16' 4"	16' 11"	4.97	5.16	266	278	331.6	346.51	6.02	6.29	6.63	6.93
7'	2.13	3	67°	19' 0"	19' 7"	5.78	5.97	348	360	433.2	448.06	7.86	8.13	8.66	8.96
7'	2.13	4	67°	21' 8"	22' 3"	6.60	6.78	430	441	534.7	549.61	9.70	9.97	10.96	10.99
7'	2.13	5	67°	24' 4"	24' 11"	7.41	7.60	511	523	636.3	651.16	11.54	11.82	12.73	13.02
7'	2.13	6	67°	27' 0"	27' 7"	8.22	8.41	593	604	737.8	752.71	13.39	13.66	14.76	15.05
9'	2.74	1	60°	14' 3"	15' 1"	4.33	4.59	308	332	383.9	413.81	6.96	7.51	7.69	8.27
9'	2.74	2	60°	16' 11"	17' 9"	5.15	5.41	443	467	551.8	581.68	10.01	10.56	11.04	11.63
9'	2.74	3	60°	19' 7"	20' 5"	5.96	6.24	578	602	719.6	749.55	13.06	13.60	14.39	14.99
9'	2.74	4	60°	22' 3"	23' 1"	6.77	7.04	713	737	887.5	917.42	16.10	16.65	17.75	18.34
9'	2.74	5	60°	24' 11"	25' 9"	7.59	7.85	848	872	1055.3	1085.28	19.15	19.70	21.11	21.70
9'	2.74	6	60°	27' 7"	28' 5"	8.40	8.66	983	1007	1223.2	1253.15	22.19	22.75	24.46	25.06
12'	3.66	2	60°	20' 8"	21' 11"	6.29	6.67	887	946	1109.7	1177.87	20.15	21.38	22.18	23.55
12'	3.66	3	60°	23' 4"	24' 7"	7.10	7.49	1126	1186	1407.7	1476.30	25.57	26.80	28.15	29.52
12'	3.66	4	60°	26' 0"	27' 3"	7.91	8.30	1365	1426	1706.1	1774.73	30.99	32.22	34.12	35.49
12'	3.66	5	60°	28' 8"	29' 11"	8.73	9.11	1604	1666	2004.5	2073.17	36.42	37.64	40.08	41.46
12'	3.66	6	60°	31' 4"	32' 7"	9.54	9.93	1842	1905	2302.9	2371.60	41.84	43.05	46.05	47.43
15'	4.57	2	60°	24' 2"	25' 10"	7.37	7.87	1554	1658	1934.8	2064.39	35.12	37.48	38.69	41.28
15'	4.57	3	60°	26' 10"	28' 6"	8.18	8.68	1929	2033	2401.1	2530.69	43.59	45.94	48.02	50.61
15'	4.57	4	60°	29' 6"	31' 2"	8.99	9.50	2304	2408	2867.4	2996.99	52.06	54.41	57.34	59.93
15'	4.57	5	60°	32' 2"	33' 10"	9.80	10.31	2678	2783	3333.7	3463.29	60.52	62.87	66.67	69.26

- * 6' - 15' BULK FEED TANKS (BFT - 60 & 67 DEGREE HOPPERS)
- Designed for the storage of free flowing material having a maximum density of 40 lbs. per cubic foot
 - Bushel capacities are calculated with no compaction and to full cubic foot capacities
 - Weight capacities are calculated at 40 lbs. per cubic foot
 - Add 19" to the fill height for top of cap height

WARNING! Non-free flowing materials including (but not limited to) soybean meal and meat by-products should not be stored in these tanks due to their inherent nature of bridging. Check with your material supplier on the flowability of your product prior to purchasing a tank. If in doubt about a specific product, contact the AP engineering department for additional recommendations. Some features are optional and may be available only on certain models. Consult your local AP dealer for details.

RIGID AUGERS

	AUGER LENGTH	MOTOR SIZE	AUGER RPM	CAPACITY (BPH)	CAPACITY @ 45° INCLINE (BPH)	CAPACITY @ 25% MOISTURE (BPH)
4" AUGER	15'	1/2 HP	545	330	265	198
	35'	3/4 HP	545	330	265	198
	45'	1 HP	545	330	265	198
6" AUGER	11'	3 HP	510	1200	960	720
	16'	3 HP	510	1200	960	720
	25'	5 HP	510	1200	960	720
	30'	5 HP	510	1200	960	720
8" AUGER	11'	5 HP	440	2100	1680	1260
	16'	5 HP	440	2100	1680	1260
	25'	5 HP	440	2100	1680	1260
	40'	7.5 HP	440	2100	1680	1260

Specifications are subject to change without notice.

BULK FEED TANKS

In today's competitive market place, it is essential to maximize the efficiency and performance of your swine production facilities. AP is the industry leader in the manufacture of innovative, durable and dependable swine production equipment designed to help you meet these goals.



VIEW WINDOWS

Save yourself a trip up and down the feed tank ladder with AP's optional view windows in either a sidewall or hopper panel mount. Feed levels inside the tank can be quickly and easily monitored at a glance.



RIGID AUGERS

Rigid 4", 6", and 8" augers are available to meet your specific capacity requirements. AP 8" and larger rigid augers are equipped with exclusive Dura-Edge™ flighting that lasts 30% longer than regular flighting.



FLEX-FLO™ DELIVERY

AP's Flex-Flo™ feed delivery system adapts to a variety of configurations and capacities to meet your particular feed delivery requirements.

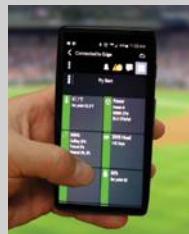


FACTORY FORMED FILL KITS AVAILABLE

Exclusive pre-punched, extruded lip roof panels for the optional pneumatic fill-kit eliminate the inconvenience of field-cutting fill and exhaust tube openings, and ensuring moisture-proof seals.

EDGE® CONTROLLER

For complete monitoring and multi-location control over all feed and environmental systems, EDGE is the total package solution. EDGE is built on a modular architecture allowing the system to be built and grow with your specific needs. EDGE features integrated diagnostics, triple layer protection, and remote access allowing you take control of the system from the comfort of your truck, office, couch and anywhere in between.



Look to AP for quality feed management solutions.



AUTOMATED PRODUCTION SYSTEMS
1004 E. Illinois St. Assumption, IL 62510 USA
Tel: 217-226-4449 Fax: 217-226-3540
Int'l Tel: 217-226-4401
Tech Support: 712-239-1011

AGCO AP is a part of GSI, a worldwide Brand of AGCO | AP-53 12/18
Your Agriculture Company Copyright © 2018 by AGCO Corporation | Printed in USA | Due to continual improvements, AP reserves the right to change designs and specifications without notice.

For more information on AP's many products and services, contact your local AP representative or visit us online at:
www.automatedproduction.com